



# Illinois Prescribed Fires Accomplished Map



John McCabe  
Illinois Prescribed Fire Council





# John McCabe

President, Illinois Prescribed Fire Council

Director of Resource Management, Forest  
Preserves of Cook County



## Who We Are

Nonprofit individuals, organizations, land managers and agencies who have an interest in ensuring the safety and effectiveness of prescribed fires in Illinois.



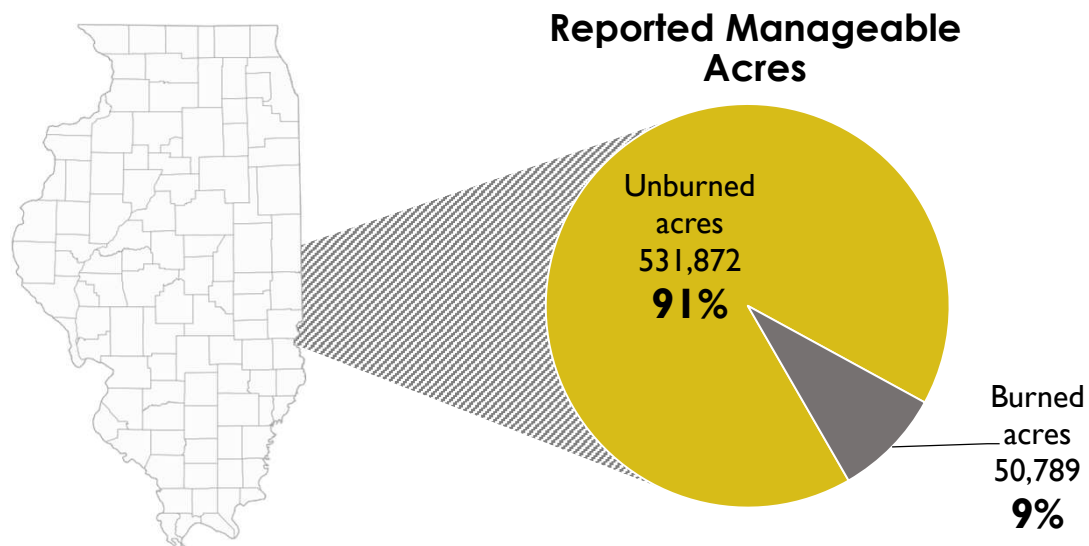
Established in  
2009



# 2016 Illinois Fire Needs Assessment

Systematic report documenting the number of acres being burned annually, perceived obstacles to implementation of more widespread fire practices, and identifying how many acres need to burn annually to maintain and restore ecosystem health.

## Key points:



**213,000**

more acres must burn annually to effectively manage and restore targets

**20%**

conservation lands too degraded to carry fire effectively

# Base Map

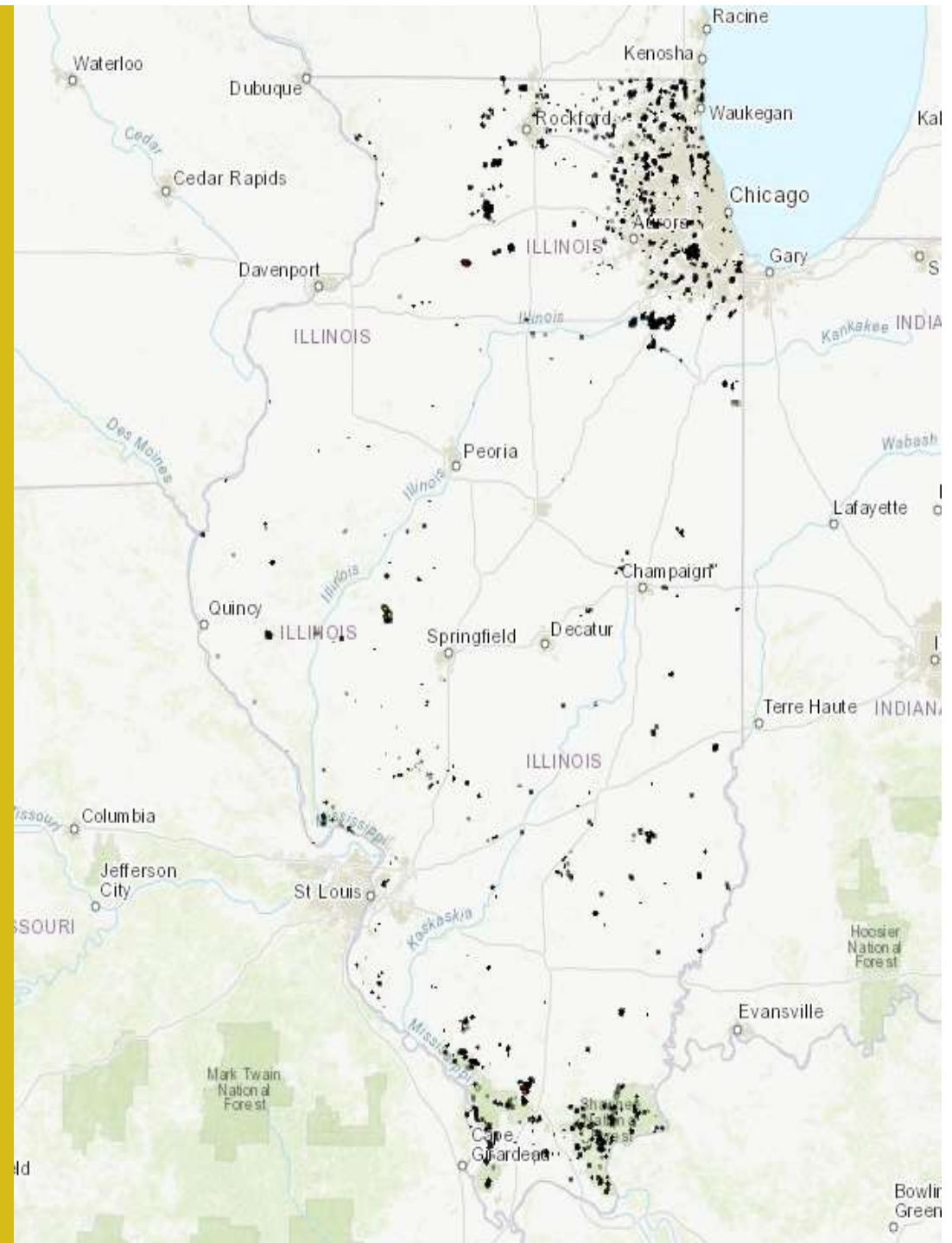


**David Holman**  
[davidmholman@gmail.com](mailto:davidmholman@gmail.com)

# Illinois Prescribed Fires Accomplished Map

Allows agencies to post polygons detailing the extent of their accomplished controlled fires on top of a layer detailing the ownership of protected lands across the state.

Based in ESRI ArcGIS



# Illinois Prescribed Fires Accomplished Map

Includes:

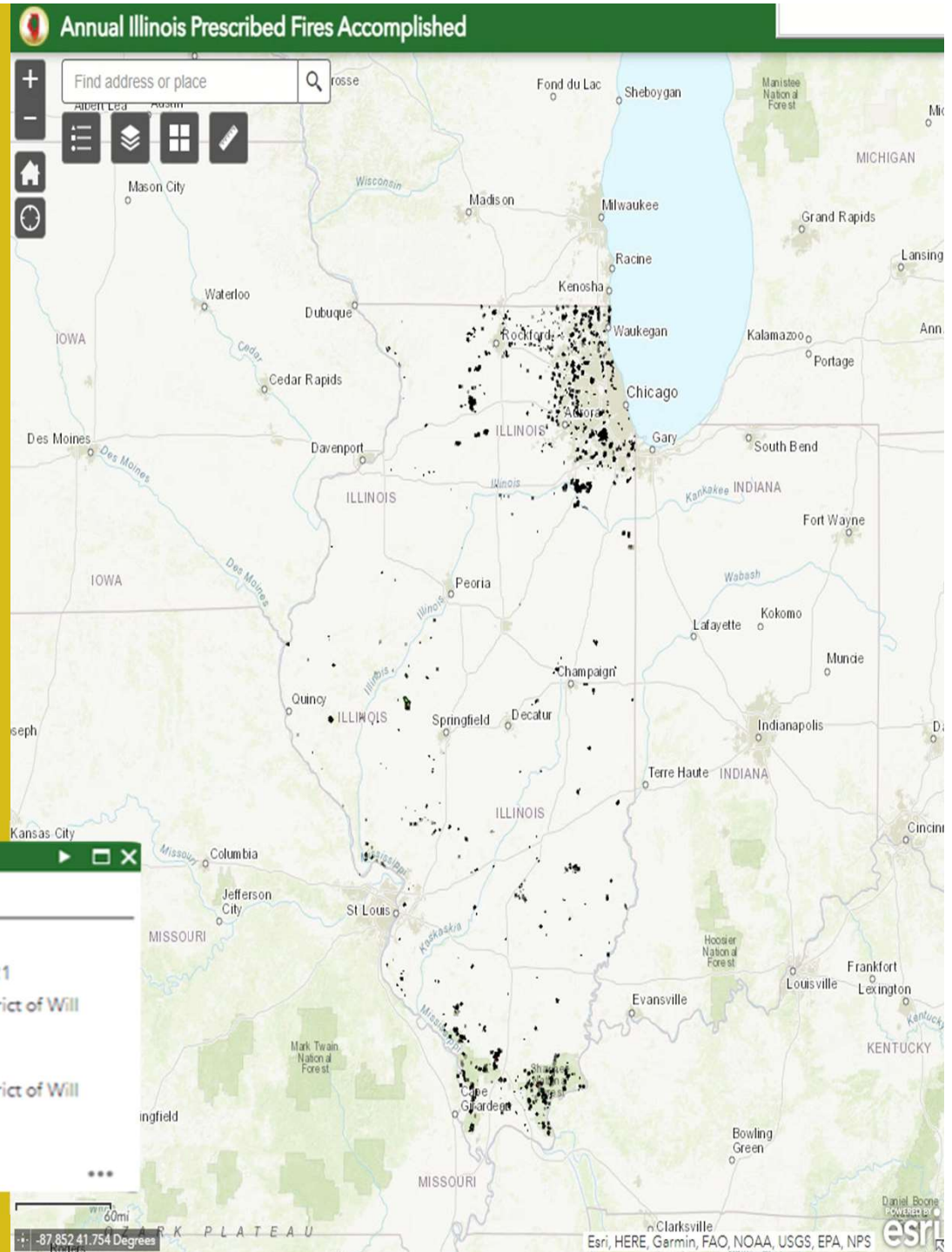
- Date of burn
- Burn season
- Acres burned
- Owner

(1 of 3)

**Prescribed\_Burns**

Date	12/10/2020
Season	7/1/2020 - 6/30/2021
Source	Forest Preserve District of Will County
Acreage	98.70
Owner	Forest Preserve District of Will County

[Zoom to](#)

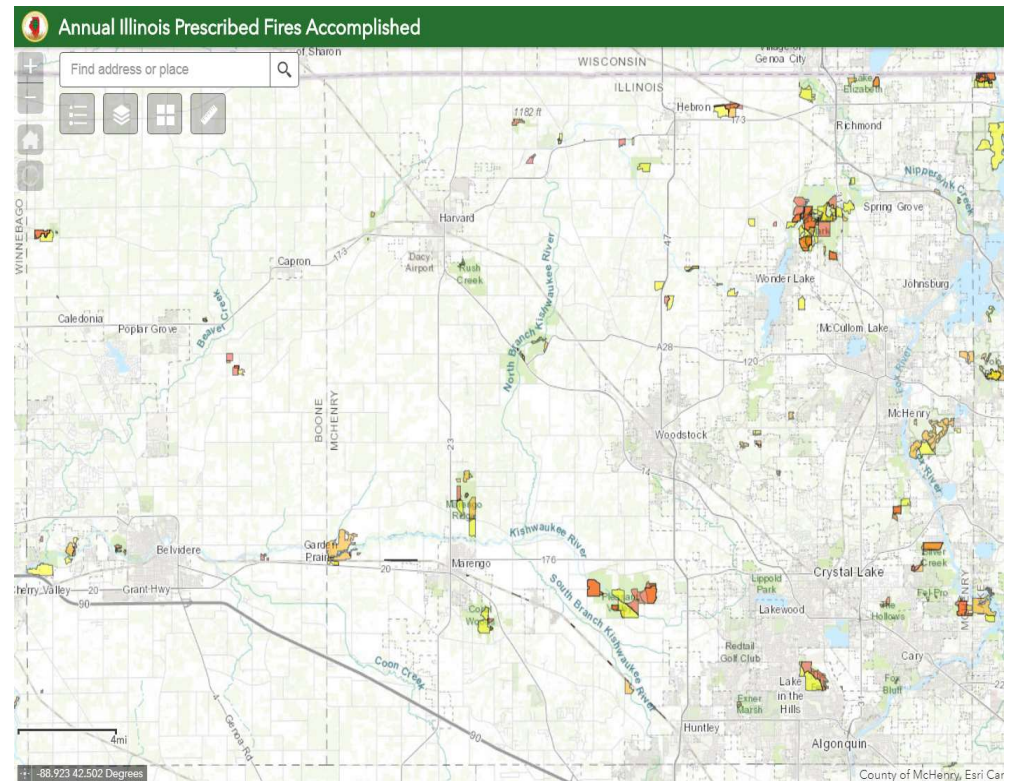




# McHenry County Conservation District



*McHenry County*  
CONSERVATION DISTRICT





2015 - 2016

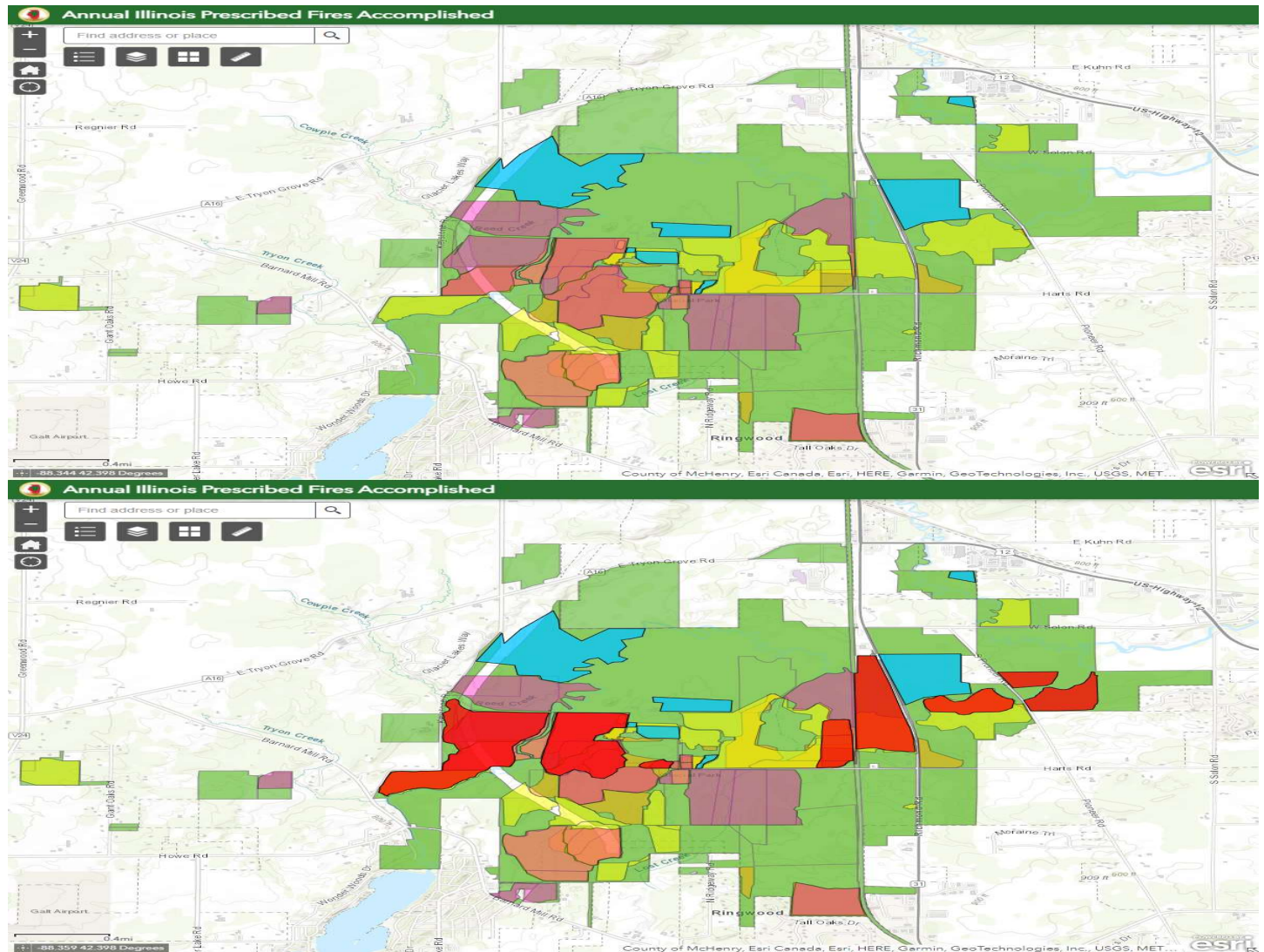
2016 - 2017

2017 - 2018

2018 - 2019

2019 - 2021

# McHenry County Data



## Information

- Rural vs urban?
- Habitat types most commonly burned?
- Soil types?
- Rare species?

## Practical Application

- Identify areas of opportunity/gaps where we can provide targeted outreach
- Tool for gathering support from the public and legislators

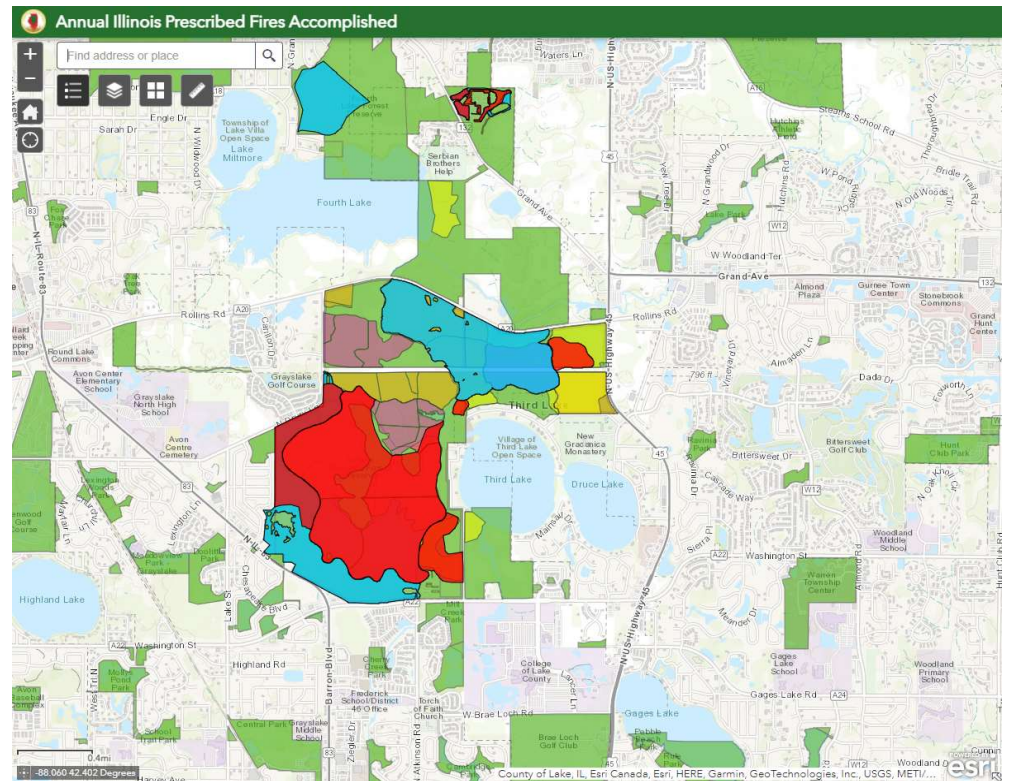
**There are lots of ways we can use this type of spatial data!**



# Lake County Forest Preserves

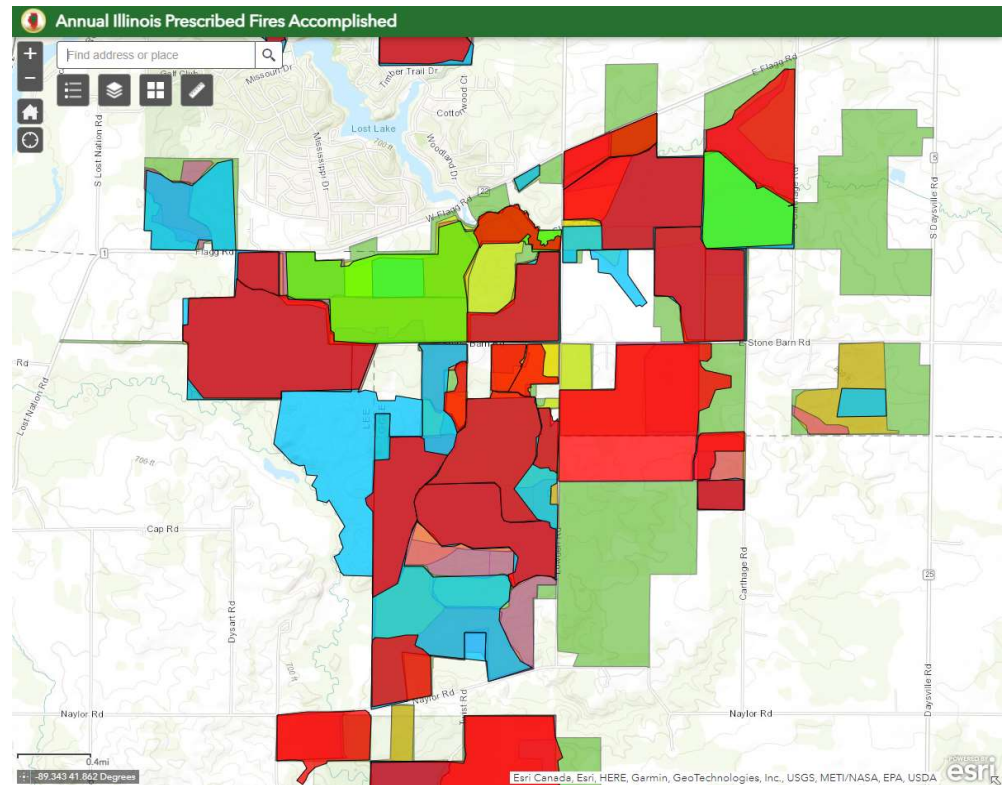


Lake County  
Forest Preserves



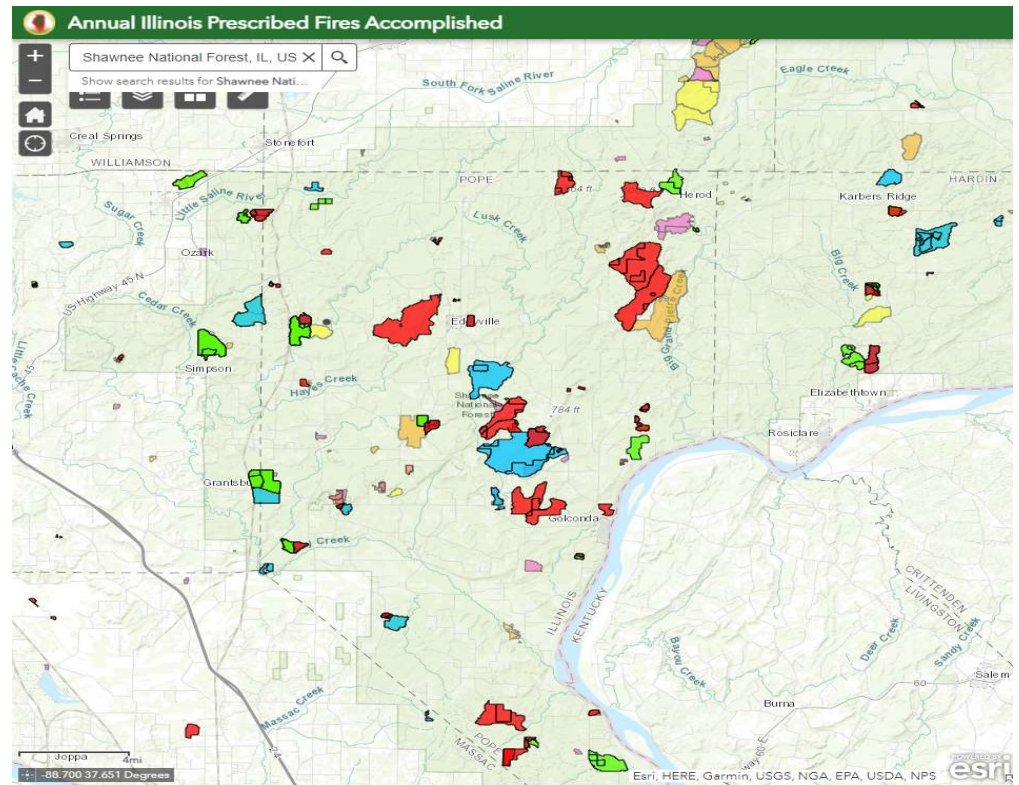


# Nachusa Grasslands | The Nature Conservancy



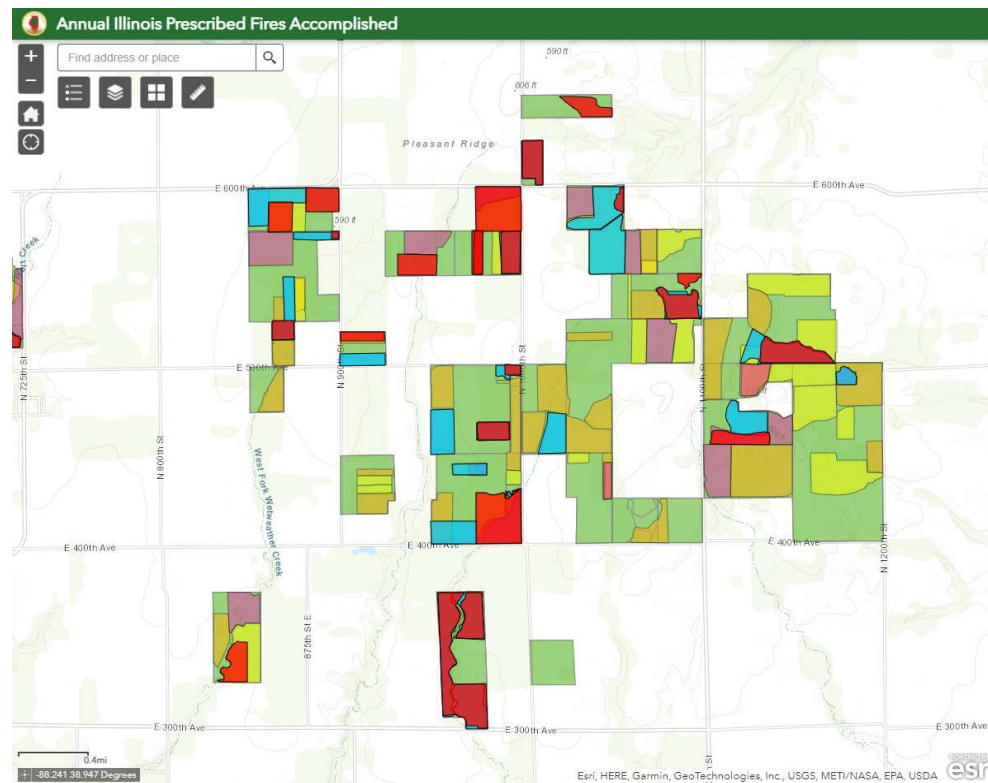


# U.S. Forest Service





# Illinois Department of Natural Resources

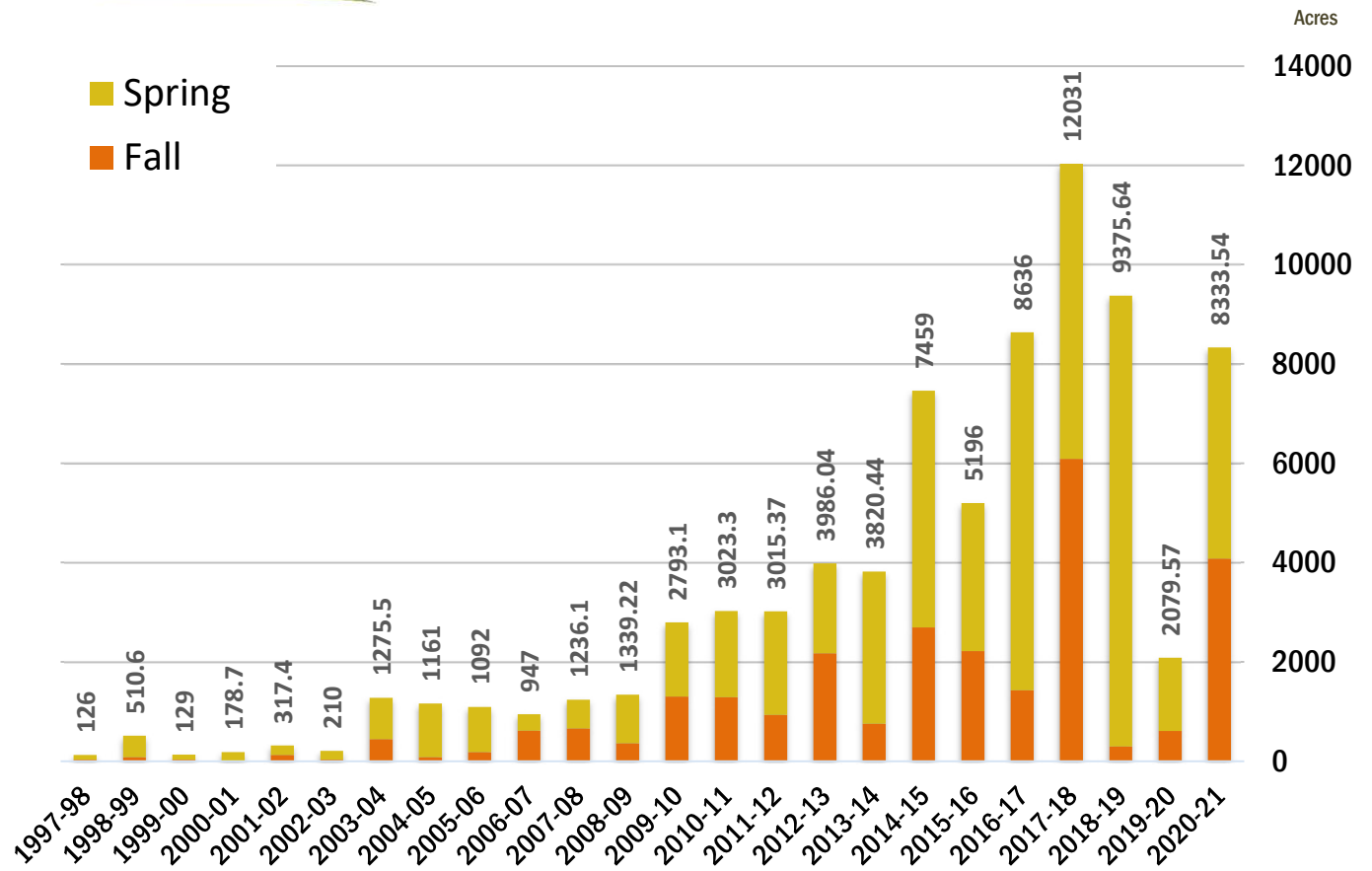




# Cook County Data

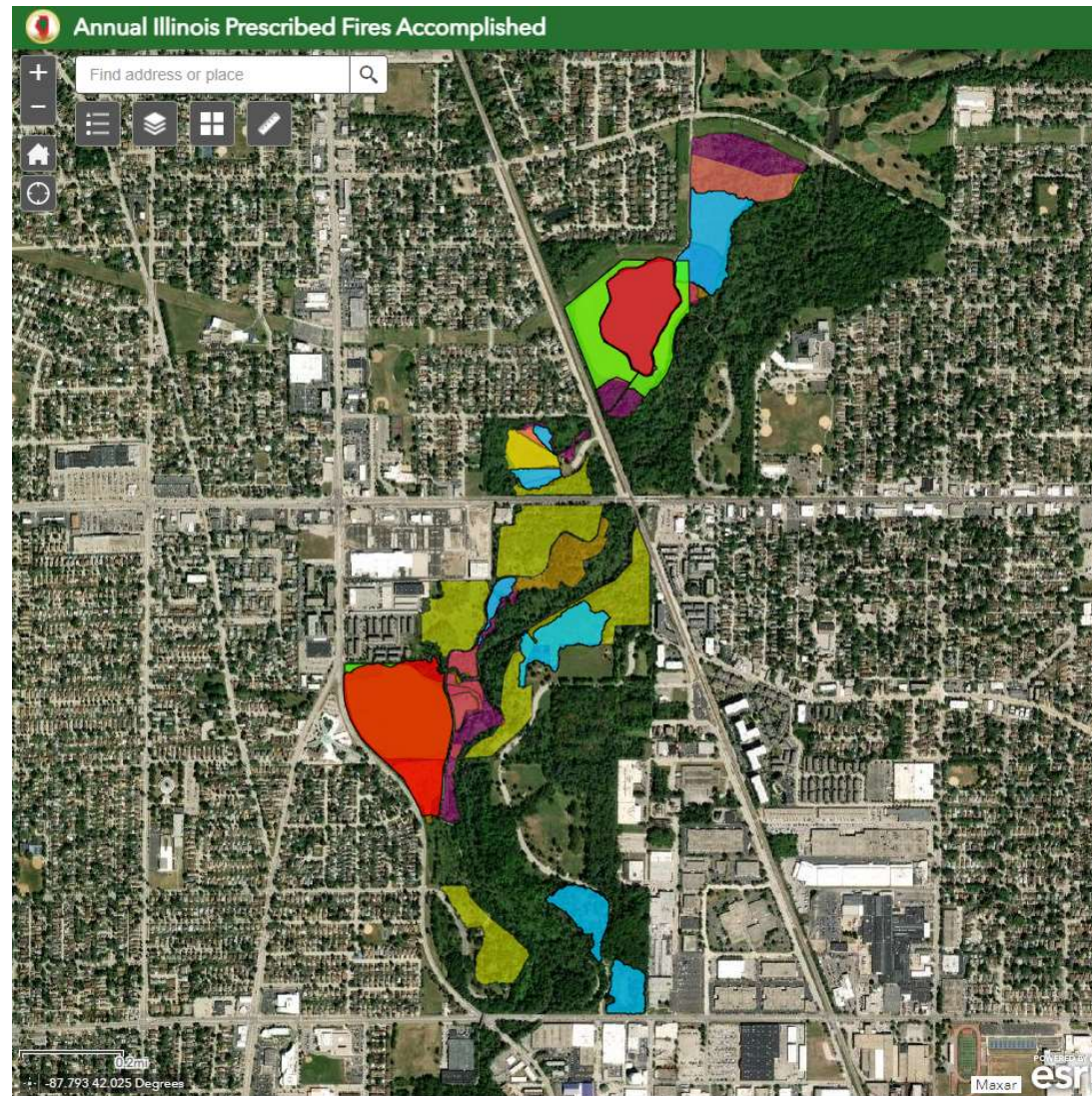


## Burn Statistics 1997 - 2021





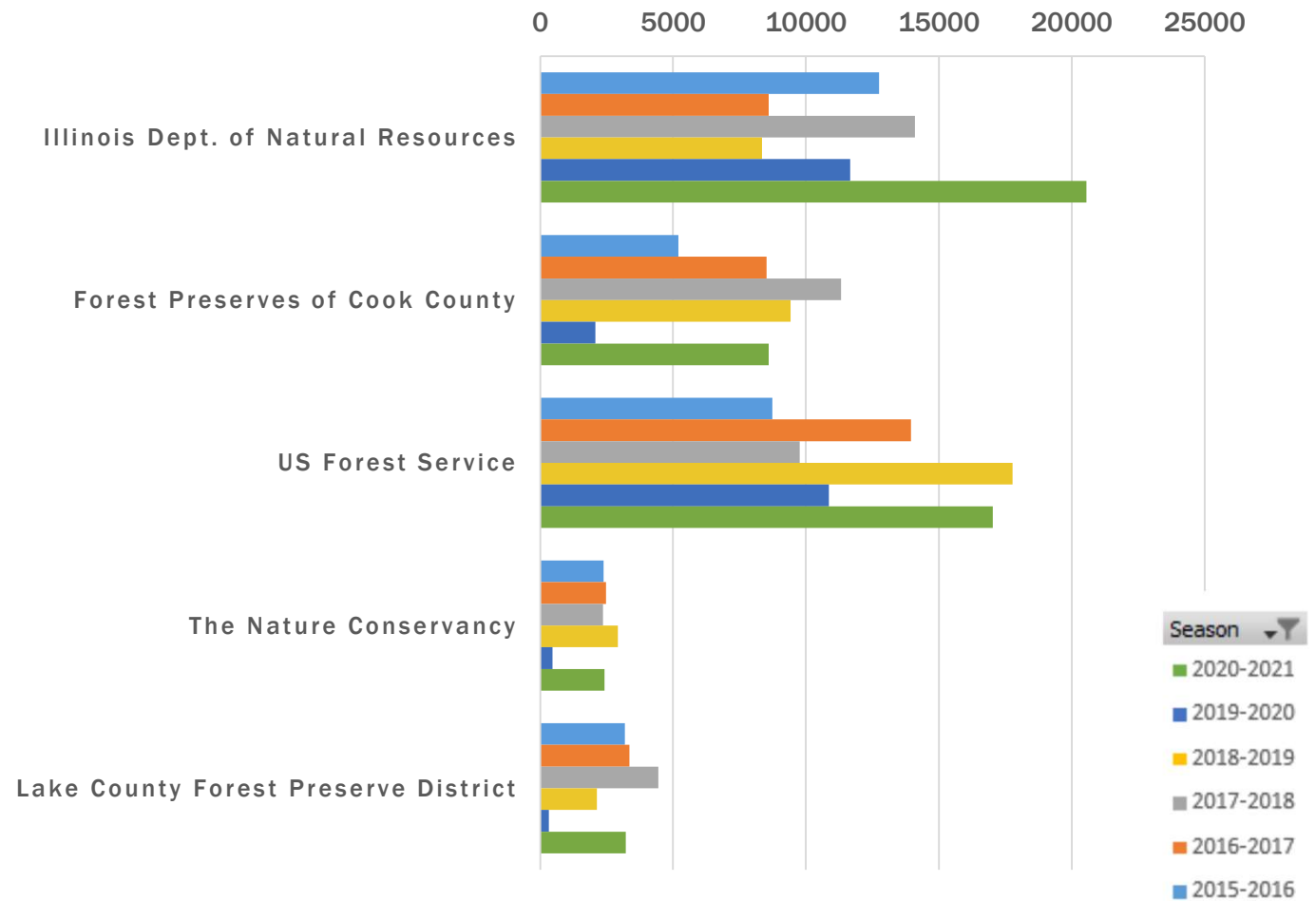
# Cook County Data





# Six Year Summary (7/2015 – 6/2021)

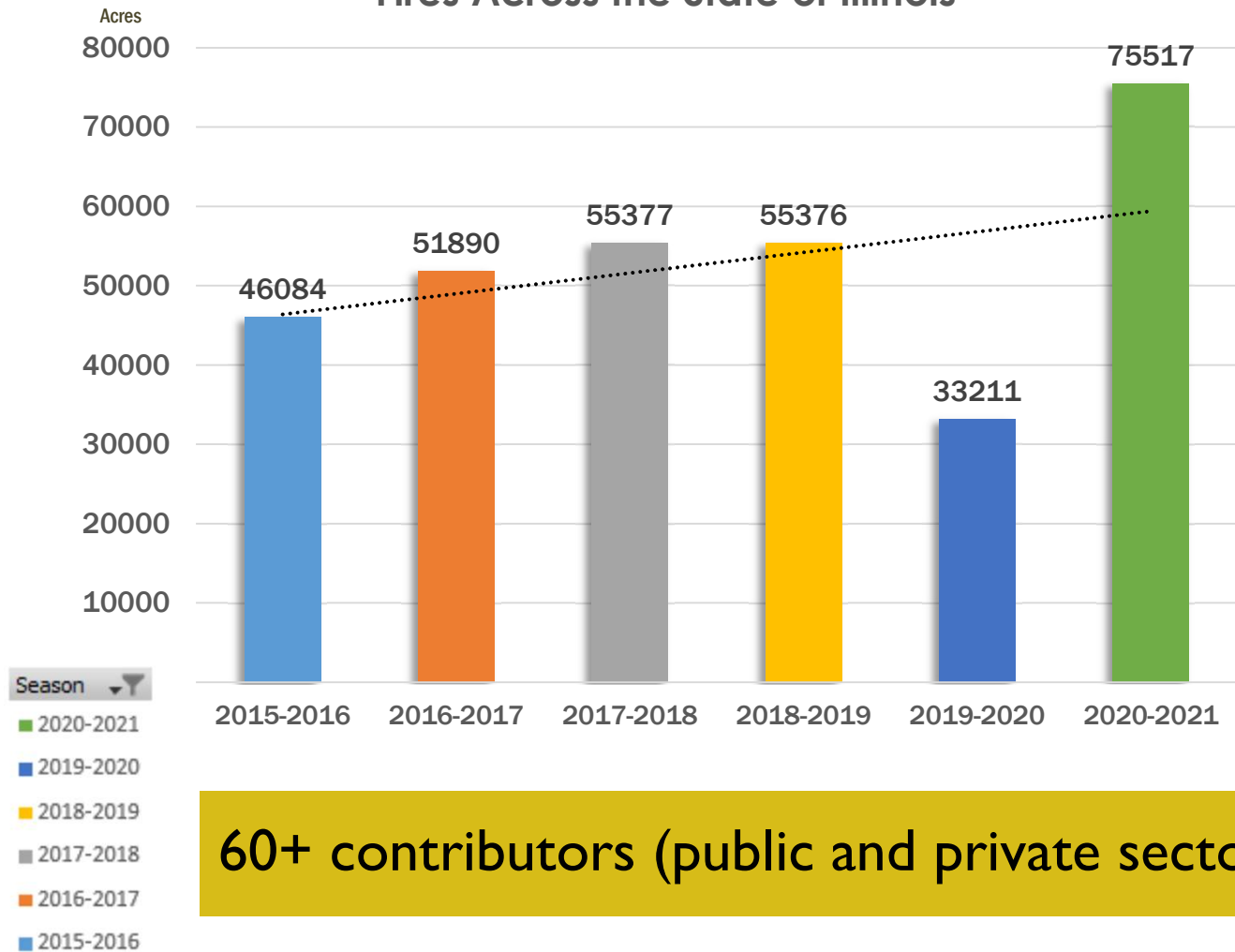
## Fires Accomplished by Agency (Sample)





# Six Year Summary (7/2015 – 6/2021)

Fires Across the State of Illinois



60+ contributors (public and private sectors)

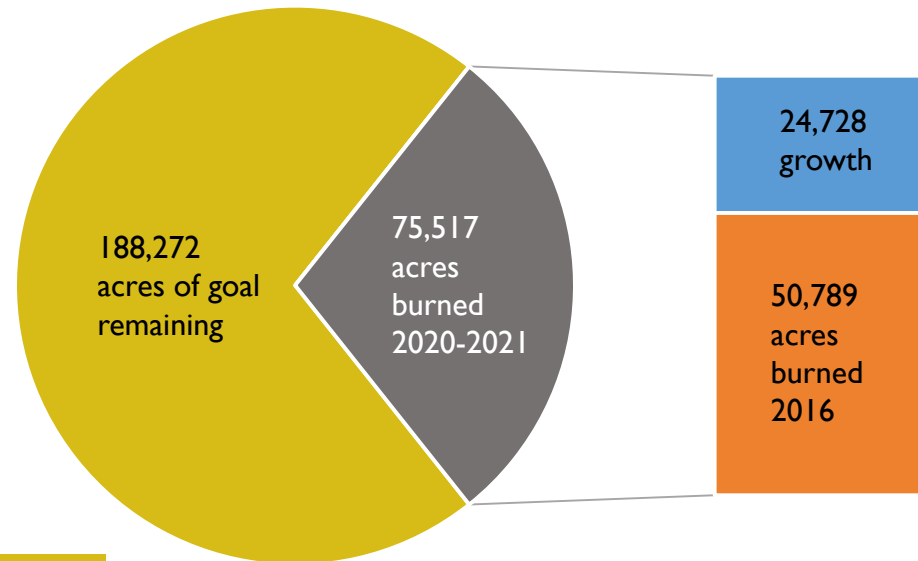


# Progress

If you recall...

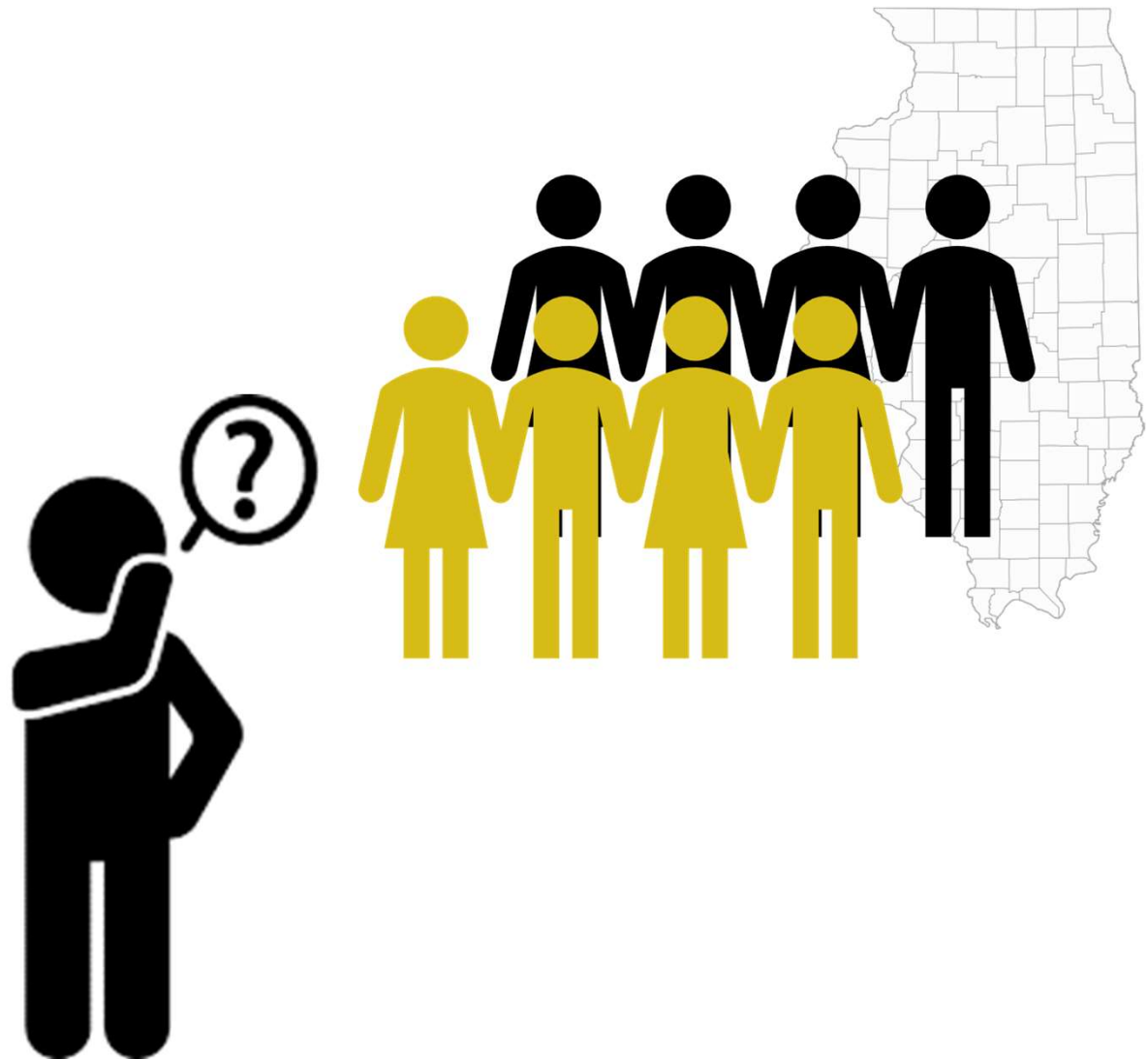
The 2016 Illinois Fire Needs

Assessment called for **213,000** additional acres to burn annually to effectively maintain and restore ecosystem health (total of 263,789 acres).



**28.6% achieved | 71.4% to go**

# Who Are We Missing?



Habitat maintenance

Fire dependent communities

Replicating cultural practices

A wide-angle photograph of a field filled with various wildflowers. In the foreground, several tall, purple, spike-like flowers (likely Spikes of Fire) stand prominently. Interspersed among them are smaller, white, daisy-like flowers. The field extends to a line of trees in the distance. The sky is a dramatic mix of orange, pink, and blue, suggesting a sunset or sunrise. The overall scene is vibrant and natural.

**Prescribed fire is our most important stewardship tool.**

Mapping our fires statewide  
shows us as one fire  
community.





# Supporting a Fire Culture

## Legislation

- Right to burn and liability insurance

## Regional Coordination

- Northeast Region Cohesive Wildland Fire Management Strategy
- Northeast-Midwest Regional Prescribed Fire Council Coordinating Group



# Supporting a Fire Culture



Illinois Prescribed Fire Council Annual Symposium



Leadership Awards



The Illinois Prescribed Fire Council Symposium brings together professional biologists, land managers, and fire operations specialists to collaborate and exchange ideas that advance the strategic use of prescribed fire in Illinois.

The event is open to the public, and offers an opportunity to network and strengthen connections across states, agencies, and disciplines.



## Keynote

William E. McClain  
Illinois State Museum

Patterns of Anthropogenic Fire  
within the Midwestern Tallgrass  
Prairie 1673-1905

**Registration is  
Open!**

See the IPFC website for details and  
a link



# How you can contribute

The Illinois Prescribed Fire Council is still accepting data from Illinois-based agencies and landowners, even for prior years' burn seasons.

Email [ILRxFiresAccomplished@gmail.com](mailto:ILRxFiresAccomplished@gmail.com) with one of these:

- Shapefile
- .kmz file

The more information we have, the better we can understand and guide the use of fire across the landscape.



**So, what's next?**



# Our Mission

To promote the safe and continued use of prescribed fire on the Illinois landscape.

# Special Thanks

Bill Kleiman,  
The Nature Conservancy

David Holman

**Photos:** *The Nature Conservancy, Dee Hudson, Joe Occhiuzzo, Forest Preserves of Cook County, Illinois Dept. of Natural Resources, Forest Preserve District of Will County...and others!*



# Contact Us

John McCabe, *President*  
Illinois Prescribed Fire Council  
[john.mccabe@cookcountyil.gov](mailto:john.mccabe@cookcountyil.gov)



[illinoisprescribedfirecouncil.org](http://illinoisprescribedfirecouncil.org)